

# City lights

Minimalism meets Mackintosh in this seductive Hoxton bathroom, designed to reflect the vibe of its city location

Report: Dee Hicks Photography: Colin Poole Styling: Tamsin Weston Illustration: Peter Davies

Handmade glass was chosen for the 'Mackintosh' panel, offering delicate variations of colour

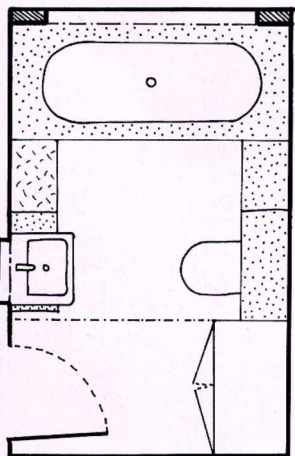


**W**hile the boundary between London's city and its near neighbour Hoxton grows increasingly blurred, Charlotte Wright insists that her end of Hoxton remains, so far, untouched by the corporate onslaught. And it was very important to her that her bathroom should not only reflect her character, but also be in keeping with the locale she loves.

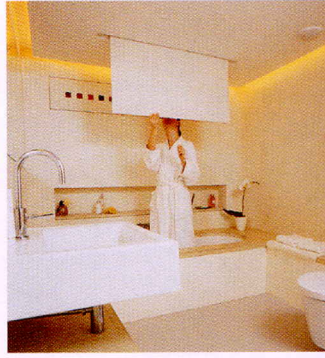
She chose Adam Dawe, who designs sets for fashion shoots as well as interiors for corporate and private clients, to translate her ideas into a working bathroom. He began by looking at what she had already had done in the house, specifically the kitchen, a combination of retro plywood units with concrete work surfaces and table top. "It wasn't something off-the-shelf and that gave me a good indication that she was fairly adventurous and would be open to ideas," he says. "Her initial brief to me was that she liked Charles Rennie Mackintosh but she also wanted something really cool and minimal and it had to have a 'nice girly spa atmosphere'."

The dividing wall between the old bathroom and the junk room next door was removed and the boiler – replaced by a vastly superior model – relocated to the roof terrace to ensure the "serious amounts of hot water" Charlotte required, plus the space in which to enjoy it. Adam specified an unobtrusive MDF cupboard to conceal the cistern for the Philippe Starck WC, and accommodate a washing machine and cleaning materials. On the adjacent wall, a platform was created to allow the deep Bette Duo bath to be semi-sunken, enhancing the spa feel.

Most of the minimalist bathrooms Charlotte had admired in magazines







The shower is screened by a vinyl roller blind placed above the bath, that disappears into the false ceiling when not in use





The large double-ended bath has been semi-sunken, enhancing the spa-like feel of the bathroom

were limestone. "But, after some consideration, we decided that the concrete in the kitchen best suited the feel of the area and the flat," says Adam. "It's urban but still soft. So we asked the company that made it for four or five samples before choosing this smooth, milky one." The concrete envelops the bath and continues down both sides of the room to provide seating.

Aware of the need, especially in London flats, to maximise space, Adam created storage units beneath the benches for towels, accessed by lift-up

lids with padded seats – "so I can sit here in comfort and paint my nails," says Charlotte.

here or there becomes," he explains. "Here, the seat pads are the same depth as the concrete, as is the

*"It's important to remember that the cleaner the look you go for, the more important a centimetre here or there becomes"*

Adam has strong advice for those contemplating a minimalist interior: "It's important to remember that the cleaner the look you go for, the more important a centimetre

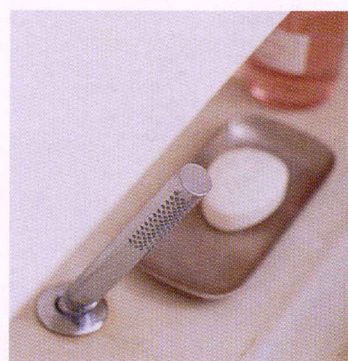
top of the WC, which is the same height as the bench. It's detail like this that you don't notice but which helps to create a space where nothing jars," he says.



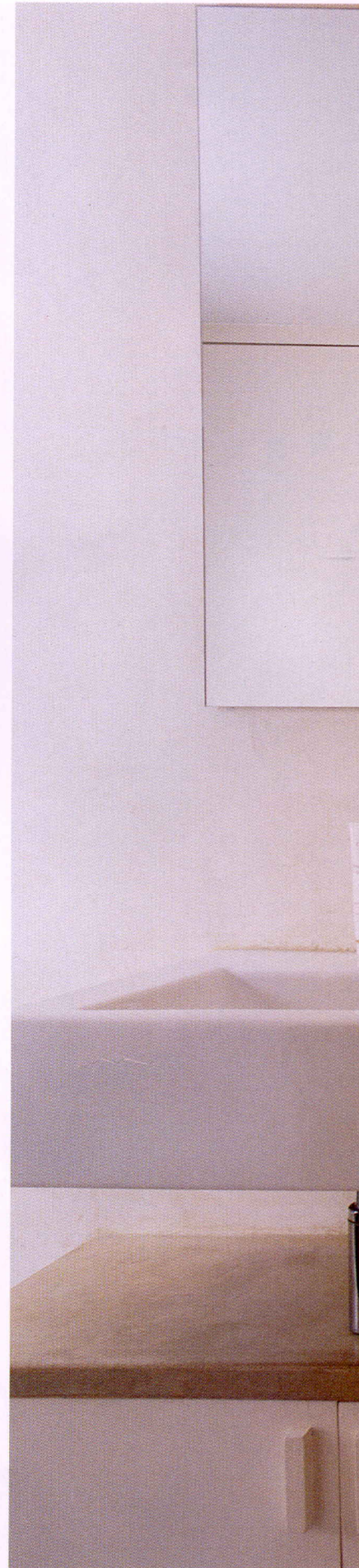
**Left:** The seat pads lift off to provide access to ample storage for towels and other items



**Centre:** Rather than store everything out of sight, Adam created a slot so that Charlotte could keep her bath products in 'controlled chaos'



**Right:** A shelf was incorporated into the false wall that conceals the shower plumbing, providing a home for bath products and a Philippe Starck shower handset







Fitting in with the Mackintosh theme, every detail in the bathroom is linear. Reflected in the mirror, the lit shadow gap between the walls and ceiling adds softness





**Left:** The Marmorino walls were spray-painted to tone with the muted tones of the concrete **Top right:** The mirror above the handbasin has a demisting panel to avoid condensation and conceals further storage **Right:** The Dornbracht Tara Classic tap was not chosen in isolation but judged on how it worked as part of the design as a whole – another of Adam's tips

Charlotte was adamant that she didn't want "tiles and criss-crosses" so the walls were made from Marmorino – a lime and marble dust plaster – and a scenic artist was hired to spray paint them to tone with the concrete. The floor is a simple screed, also painted,

and conceals underfloor heating. But the room's transforming feature is the illuminated panel of rosy-hued glass above the bath – the Mackintosh element. It defines the room as warm and feminine, rather than cool and masculine. "Lighting is key to any

scheme," says Adam, "it controls the feel of a room." The perimeter lighting and the glass panel are for when Charlotte just wants to chill out in a spa atmosphere, while the spotlights provide stronger light when needed. The one next to the shower rose in the

ceiling creates a beautiful sparkling effect with the water when she showers.

"I'm quite proud of this room – the mood is very sensual," says Adam. "Some of the minimalist bathrooms you see are stunning but soulless; this one isn't." ■

## Q&A: HOMEOWNER

### Did the finished bathroom live up to your expectations?

"Totally – I wanted something that was really luxurious and special but that was not going to jar with the rest of the flat, and that's what I got."

### Do you have a favourite item?

"There's not one single thing, but the whole experience – the lighting, the smoothness, the colour; it's very warm."

### Is there anything you'd do differently?

"The floor was the only thing I wasn't sure about – we ran out of money, so I may go back to that... but it has worked out very well and I didn't want tiles anyway."

### Do you have any other tips?

"Have speakers fitted into your bathroom ceiling – I'm never going to have a bathroom without music again!"

## COST

A similar bathroom would cost £12,000, excluding design and project management

## CONTACTS

**Design** Adam Dawe adamdawedesign@hotmail.com

**Construction** C&D Joinery Ltd (07767 608215)

**Concrete** DM Design (07958 545641 or dmdesign@supanet.com)

Marmorino Paintworks (020 7792 8012)

**Handmade glass** Lead & Light Warehouse (020 7485 0997)

**Shower blind** Universal Blind and Curtain System (01727 875533)

All the following are from Colourwash (020 8944 6456 or www.colourwash.co.uk)

**Philippe Starck WC** Duravit (0870 730 7787 or www.duravit.com) **Philippe Starck pullout shower**

**handset** Hansgrohe (0870 770 1972 or www.hansgrohe.co.uk) **Bette bath** (01789 262262 or

www.bette.co.uk) **Tara basin tap** Dornbracht (01444 473355 or www.dornbracht.com) **Shower**

**controls** Swadling Brassware (023 9225 5536 or www.swadlingbrassware.com)

**Accessories** Pink bottles, lotions and plant all from Marks & Spencer (020 7268 1234 or www.marks-and-spencer.co.uk)